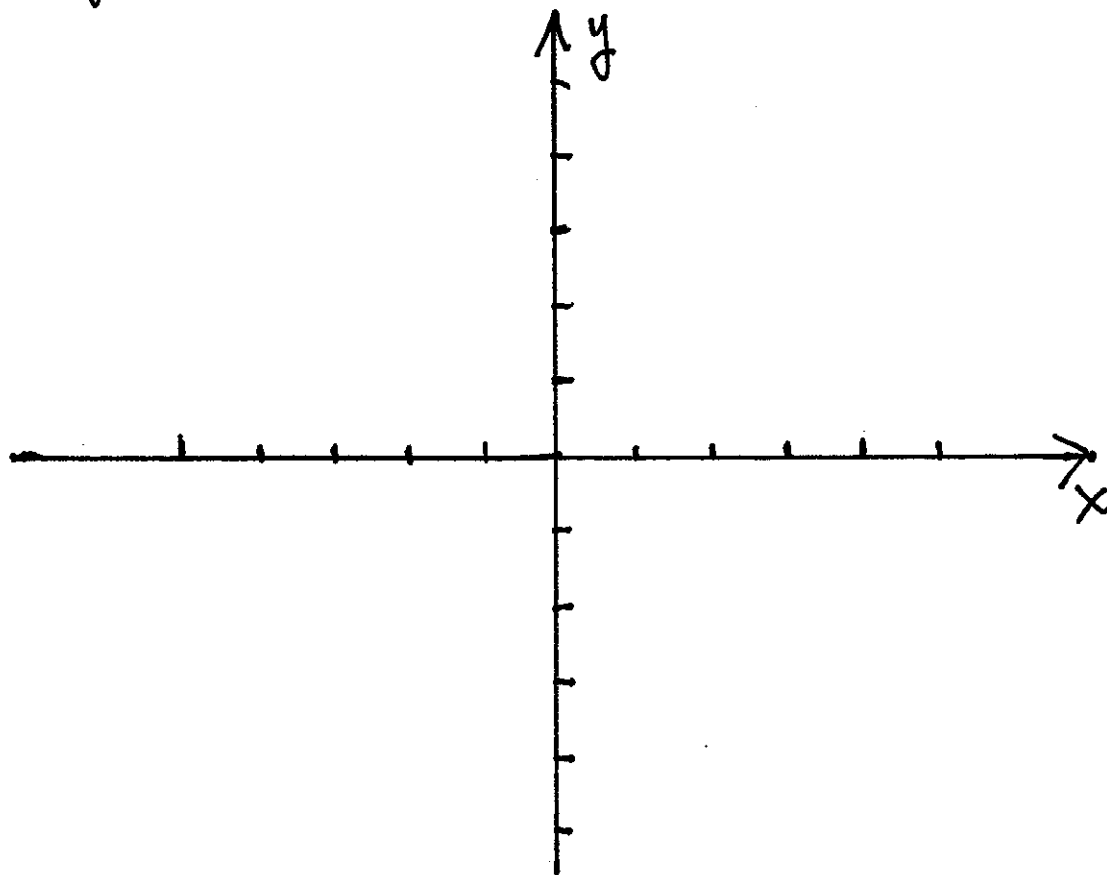
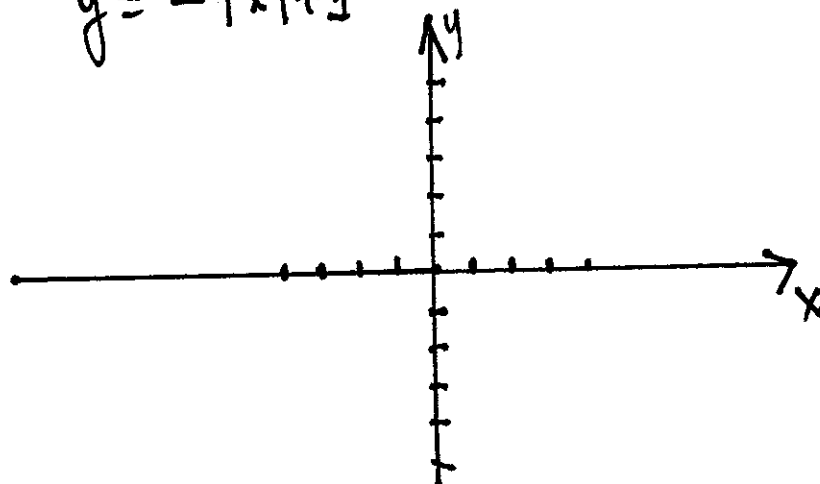


Worksheet on graph transformations

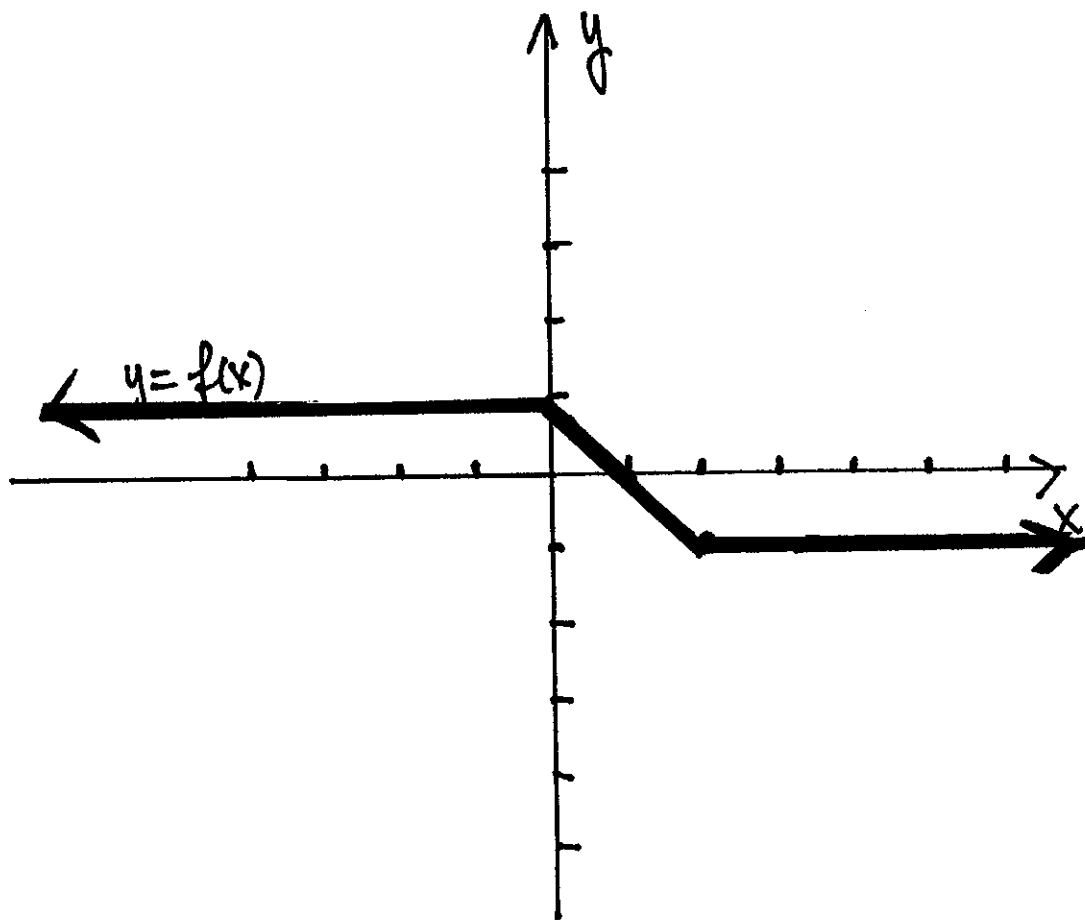
1. Using the graph of $y = x^2$, sketch the graph of
 $y = (x-1)^2 + 2$



- 2.) Using the graph of $y = |x|$, sketch the graph of
 $y = -|x| + 1$



3. Given below the graph of $y = f(x)$, sketch the graph of $y = 2f(x+4) + 2$

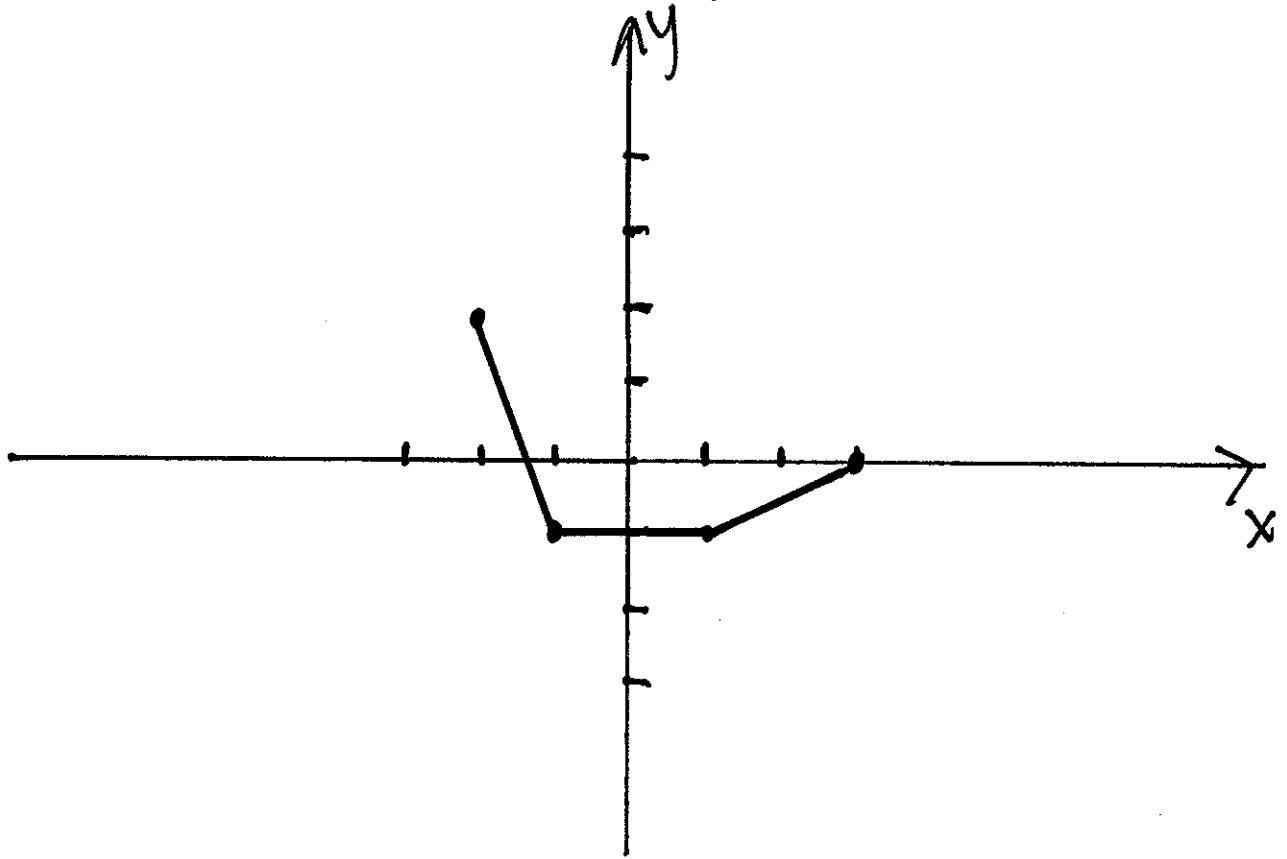


4. List the transformations required to plot

$$y = -\frac{1}{x+2} - 1$$

5.

Given the graph of $y = f(x)$ below



a.) Sketch the graph of $y = f(x) + 2$

b.) " of $y = f(x+2)$

c.) " " $y = -f(x)$

d.) " " $y = f(-x)$